



Photo: D. Gorenak

Sustavnim ulaganjem u opremu i ljude, a koristeći izvanredna svojstva gume kao sirovine, GUMIIMPEX-GRP ide u korak s tehnologijom i odgovara na potrebe tržišta. Dobro opremljene proizvodne linije omogućuju brzu prilagodbu i realizaciju vrlo široke palete proizvoda, prema potrebi korisnika.

Izrada **velikih serija** moguća je na injektivnim prešama velikog kapaciteta, sa silom zatvaranja 250 i 400 tona.

Izrada **proizvoda izuzetno velikih dimenzija** ostvaruje se na velikoj klasičnoj preši sa silom zatvaranja do 1200 tona. Kroz veći broj klasičnih preša, dimenzija od 400x400 mm do najveće gabarita 1500x1800 mm, omogućuje se **istovremena izrada više serija** gumenih proizvoda različitih oblika i primjene. Kalupi se izrađuju u **vlastitoj alatnici**, opremljenoj strojevima za obradu metala.

**Vulkanizacija gume** u velikom autoklavu promjera 3000 mm i dužine 6000 mm omogućuje vulkanizaciju proizvoda velikih gabarita, a tu je i manji autoklav promjera 1500 mm i dužine 3000 mm.

**Proizvodi od reciklirane gume** izrađuju se na linijama za prešanje gumenih obloga i izradu kotača.

Suvremeno opremljen **laboratorij** s umjerenim instrumentima za ispitivanje fizikalnih karakteristika gumenih smjesa i gotovih proizvoda osigurava sljedivost i stalnu ujednačenu kvalitetu.

Dva posebno opremljena autoklava za vulkanizaciju obnovljenih guma znatno povećavaju kapacitet linije obnove guma. **Interferometrijska oprema** ITT SFERA 3000 omogućuje dubinski ulazni pregled gume prije obnove i utvrđuje moguća oštećenja prije procesa obnove. Važna je i završna kontrola obnovljene gume o čemu se ovom opremom za svaku gumu može dobiti DVD zapis.

With steadily and systematic investments in equipment and people, and using extraordinarily characteristic of rubber as raw material, GUMIIMPEX-GRP keeps pace with the newest technology and respond to market needs.

Well-equipped production lines allow rapid customization and implementation of a wide range of products to meet customer needs.

Production in **big series** is carried out on injection presses with big capacity, with closing force from 250 and 400 tons.

Production of **products of extremely large dimensions** is carried out on great classic press with a closing force up to 1200 tons, dimensions from 400x400 up to biggest dimensions 1500x1800 mm, which **allows the simultaneous production of multiple series** of rubber products of various forms and applications.

Moulds are made in our own tool room equipped with machinery for metalworking.

**Rubber vulcanization** in bigger autoclave with 3000 mm diameter and 6000 mm length, enables the vulcanization of products in large dimensions, and also there is a smaller autoclave too, with 1500 mm in diameter and length of 3000 mm.

Products from recycled rubber are produced in the production line for production of pressed rubber tiles and on the line for production of rubber wheels.

**The modern laboratory** equipped with calibrated instruments for testing moderate physical characteristics of rubber compounds and finished rubber products, ensuring traceability and constant uniform quality.

Two specially equipped autoclaves for vulcanization of retreaded tires increased significantly the capacity of retreading production line. **Interferometric equipment** ITT SFERA 3000 enables subsurface ingoing control and determine possible damages before retreading process.

Higly important is also outgoing control of retreaded tire with this equipment, and customer for each tire can receive a DVD record.



Međunarodna norma ISO 9001 potiče prihvaćanje procesnoga pristupa u primjeni i poboljšavanju učinkovitosti sustava upravljanja kvalitetom te povećavanje zadovoljstva kupca zadovoljavanjem njegovih zahtjeva. Usklađena je s normom ISO 14001, a u GUMIIMPEX-GRP uvedena je kao integrirani sustav upravljanja kvalitetom i aspektima okoliša.

Naš planet trenutno je u potpunoj dominaciji čovjeka koji svojim postupcima svakodnevno mijenja izgled i strukturu okoliša. Velika većina gospodarskih djelatnosti rezultira kontinuiranim zagađenjem tla, zraka i vode što motivira sve više organizacija da započnu sustavno upravljati okolišem i pomognu u smanjenju emisija koje negativno djeluju na planet Zemlju. Osim navedenoga, sve su brojniji zahtjevi zakonodavaca i raznih drugih zainteresiranih strana vezani uz zaštitu okoliša kojima se organizacije trebaju prilagoditi. Iskustvo dokazuje da postoji izravna veza između poslovne uspješnosti i odgovornog upravljanja okolišem, odgovornog u stavu, strategiji i djelovanju. **Od 2004. godine sustav GUMIIMPEX-GRP je certificiran prema međunarodnim normama ISO 9001 i ISO 14001.**



International standard ISO 9001 proceed acceptance of procedural approach to the appliance and improving efficiency of quality management system, which also results with increasing of customer contentmens by fulfilling customer demands. ISO 9001 is aligned with standard ISO 14001, and was imposed in GUMIIMPEX-GRP as integrated system of quality and enviroment management.

In this moment our Planet is under full domination of Human beeing that changes the appearance and structure of the enviroment ewery day. Mayority od economic activities reults with continous polution of ground, air and water what motivates more and more organizations and companies to start systematicaly manage the enviroment and this way help to reduce emisions which negative affects the Planet Earth. Beside all this, there are more and more numerous legislator demands and demands from other interested parts conected to enviroment protection that requires adjustment from organization and companies.

Experience shows that there is directly conection between business sucess and responsible enviroment management, responsible in stand, strategy and activites. **Since year 2004, GUMIIMPEX-GRP system is certificated according the international standards ISO 9001 and ISO 14001.**



**Adresa sjedišta • Head office**

GUMIIMPEX-GRP d.d.  
Pavleka Miškine 64c  
42 000 VARAŽDIN  
HRVATSKA / CROATIA

Tel.: +385 42 404 500  
Fax: +385 42 404 542

www.gumiimpex.hr  
info@gumiimpex.hr

**KONTAKTI - PRODAJA gumeno-tehničkih proizvoda i obnovljenih guma**

**CONTACTS – SALES of rubber tehncial products and retreaded tires**

CONTACT LANGUAGES: ENGLISH, GERMAN  
Tel.: +385 42 404 586, 404 523, 404 530, 404 550  
Fax: + 385 42 404 543

**KONTAKTI - PRODAJA proizvoda od reciklirane gume**

**CONTACTS - SALES of ruber recycled products**

Tel.: +385 42 684 441, 404 523, 404 586  
Fax: +385 42 684 445

1970 • 2010



Tehnologijom ZA okoliš i čovjeka!



1970 • 2010

- **proizvodi od gume**
- **rubber products**
- **proizvodi od reciklirane gume**
- **recycled rubber products**
- **obnovljene gume za teretna vozila i autobuse**
- **tire retreading**

## BRTVE ZA KORUGIRANE CIJEVI / SEALS FOR CORRUGATED PIPES



Promjeri od DN 150 do DN 1000.  
**MATERIJALI:** EPDM prema standardima DIN EN 681 WC i WCL.  
 Specijalno razvijen oblik brtve osigurava sigurno brtvljenje i uštedu materijala.  
 Diameter from DN 150 to DN 1000.  
**MATERIALS:** EPDM according to the DIN EN 681 WC and WCL.  
 Specially developed form of the seals provides secure sealing and material savings.

## GUMENE BRTVE / RUBBER SEALS



**GUMENE BRTVE "LEPTIR" VENTILA**  
 Izrada u alatima, mogući promjeri od DN 25 do DN 1400  
**MATERIJALI:** EPDM, NBR, SILICON, FPM, NR, CSM

**RUBBER SEALS FOR „BUTTERFLY“ VALVES**  
 Moulded product, diameter from DN 25 to DN 1400  
**MATERIALS:** EPDM, NBR, SILICONE, FPM, NR, CSM.



**TYTON brtve**  
 Izrađene kombinacijom dvaju materijala različite tvrdoće. **MATERIJALI:** EPDM, NBR – prema zahtjevu s certifikatima za pitku vodu. 15 različitih dimenzija u rasponu od DN 80 do DN 1000.

**TYTON SEALS**  
 Made in combination of 2 different materials in 2 different hardness. **MATERIALS:** EPDM, NBR - certificate for drinking water on demand. 15 different dimensions in range from DN 80 to DN 1000



**KS brtve spojnih elemenata cjevovoda**  
**MATERIJALI:** NBR, EPDM, FPM (CERTIFIKAT – KTW, DFGW, WRAS...)  
 15 različitih dimenzija u rasponu od DN 63 do DN 400.

**KS seals of binding components for pipelines**  
**MATERIALS:** NBR, EPDM, FPM (CERTIFICATES: KTW, DFGW, WRAS...)  
 15 different dimensions in range from DN 63 to DN 1000



**BMF brtve spojnih elemenata cjevovoda**  
**MATERIJALI:** NBR, EPDM, FPM (CERTIFIKATI KTW, DFGW, WRAS...)  
 12 različitih dimenzija u rasponu od DN 50 do DN 400.

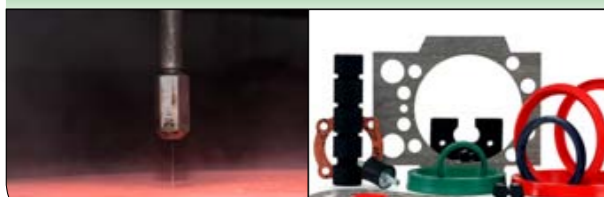
**BMF seals of binding components for pipelines**  
**MATERIALS:** NBR, EPDM, FPM (CERTIFICATES: KTW, DFGW, WRAS...)  
 12 different dimensions in range from DN 50 to DN 400



**PROFILNE BRTVE – izrađene prema zahtjevima kupaca**  
**MATERIJALI:** EPDM, NBR, SILICON, FPM, CLIIR, CR, NR, CS  
 – maksimalan promjer profila Ø 140mm

**PROFYLE SEALS - made on customers demands**  
**MATERIALS:** EPDM, NBR, SILICONE, FPM, CLIIR, CR, NR, CS  
 – max. Diameter of profyle Ø 140mm

## PLOSNATE BRTVE - GASKET JET / GASKETS



Izrezivanje plosnatih brtvi vodenim mlazom tlaka do 3500 bara.  
 Dimenzije stola za rezanje 1500x2000mm (nemetali), 800x1000 mm (metali).  
 Mogućnost hitne izrade iz široke palete materijala: gume svih kvaliteta, PTFE, klingeriti, pluto, spužve, metali...  
 Prednost: nije potrebno raditi alate, brža izrada.  
 Gaskets cutting with water jet under pressure to 3500 bar.  
 Dimensions of cutting table : 1500 x2000 mm (for non metals), 800x1000 (for metals).  
 Possibility of urgent production from wide range of materials: rubber materials in wide range of quality, PTFE, clingerits, cork, foam, metals.... Advantage: no need for moulds , faster production.m

## GUMENE MEMBRANE / RUBBER DIAPHRAGMES .



**PLITKE GUMENE MEMBRANE – TIP B: IZRAĐENE U ALATIMA**  
 9 dimenzija u rasponu od DN 25 do DN 300  
**MATERIJALI:** EPDM, NBR, CSM, CLIIR, NR, CR

Prema zahtjevima s certifikatima KTW, WRAS, DFGW.  
**SHALLOW RUBBER DIAPHRAGMES – TYPE B: MOULDED**  
 9 dimensions in range from DN 25 to DN 300  
**MATERIALS:** EPDM, NBR, CSM, CLIIR, NR, CR  
 On demand with certificates KTW, WRAS, DFGW



**DUBOKE GUMENE MEMBRANE – TIP FD; IZRAĐENE U ALATIMA**  
 9 dimenzija u rasponu od DN 25 do DN 300  
**MATERIJALI:** EPDM, NBR, CSM, CLIIR, NR, CR

Prema zahtjevima s certifikatima KTW, WRAS, DFGW.  
**DEEP RUBBER MEMBRANES – TYPE FD; MOULDED**  
 9 dimensions in range from DN 25 to DN 300  
**MATERIALS:** EPDM, NBR, CSM, CLIIR, NR, CR  
 On demand with certificates KTW, WRAS, DFGW

## GUMIRANJE / RUBBER COATING

GUMIRANJE METALNIH POVRŠINA KOJE SU IZLOŽENE UTJECAJU AGRESIVNIH MEDIJA, HABANJU, ZAŠTITA OD KOROZIJE. OVISNO O ZAHTJEVU RAZLIKUJEMO GUMIRANJE "MEKOM" GUMOM TVRDOĆE DO 70 Sh-A I "TVRDOM" GUMOM TVRDOĆE DO 70 Sh-D. **Vulkanizacija u autoklavu maksimalnog promjera 3000mm i duljine 6000mm.**  
**Garancija na izvedene radove do 10 godina. Materijali za gumiranje s certifikatima za upotrebu u kontaktu s pitkom vodom (KTW, WRAS).**  
 RUBBER COATING OF METAL SURFACES THAT ARE EXPOSED TO IMPACT OF AGGRESSIVE MEDIUMS AND ABRASION, AND AS PROTECTION FROM CORROSION.  
 RUBBER COATING OF METAL SURFACES CAN BE MADE WITH „SOFT“ RUBBER IN HARDNESS TO 70 Sh-A, AND WITH „HARD“ RUBBER IN HARDNESS TO 70 Sh-D  
**Vulkanization in autoclave max. diameter up to 3000 mm and length of 6000 mm. Up to 10 years guarantee on performed work. Coating materials with certificates for drinking water (KTW, WRAS).**



**GUMIRANI KLINOVI – meko gumiranje**  
 izrada vulkanizacijom u alatima  
 dimenzije od DN 60 do DN 500  
**MATERIJALI:** EPDM, NBR, tvrdoće do 70Sh-A  
**RUBBER COATED BOLTS – „soft“ rubber coating**  
 - moulded  
 - dimensions from DN 60 to DN 500  
 - MATERIALS: EPDM, NBR hardness to 70 Sh-A



**GUMIRANI KLINOVI – tvrdo gumiranje**  
 oblaganje nevulkaniziranom "tvrdom" gumom i naknadna vulkanizacija u autoklavu  
 dimenzije od DN 100 do DN 600  
**MATERIJALI:** WAGUNIT, CHEMONIT...  
**RUBBER COATED BOLTS – „hard“ rubber coating**  
 rubber coating with raw „hard“ rubber and subsequently vulkanization in an autoclave  
 dimensions from DN 100 to DN 600  
**MATERIALS:** WAGUNIT, CHEMONIT



**GUMIRANA KUČIŠTA – diskovi zasuna**  
 oblaganje nevulkaniziranom "tvrdom" gumom i naknadna vulkanizacija u autoklavu  
 dimenzije: od DN 100 do DN 2400  
**MATERIJALI:** tvrda guma WAGUNIT, CHEMONIT  
**RUBBER COATED HOUSINGS - SLIDE DISKS**  
 rubber coating with raw „hard“ rubber and subsequently vulkanization in an autoclave  
 dimensions from DN 100 to DN 2400  
**MATERIALS:** WAGUNIT, CHEMONIT



**GUMIRANA KUČIŠTA – tvrda guma**  
 oblaganje nevulkaniziranom "tvrdom" gumom i naknadna vulkanizacija u autoklavu  
 dimenzije: od DN 100 do DN 2400  
**MATERIJALI:** tvrda guma – WAGUNIT, CHEMONIT  
**RUBBER COATED HOUSINGS – HARD RUBBER**  
 rubber coating with raw „hard“ rubber and subsequently vulkanization in an autoclave  
 dimensions from DN 100 to DN 2400  
**MATERIALS:** WAGUNIT, CHEMONIT



**GUMIRANA KUČIŠTA – "meko" guma tvrdoće do 70 Sh-A**  
 izrada vulkanizacijom u kalupu na prešama  
 maksimalne dimenzije do DN 1400  
**MATERIJALI:** EPDM, NBR, CSM  
**RUBBER COATED HOUSINGS – „soft“ rubber in hardness till 70 Sh-A**  
 moulded  
 max. Dimension up to DN 1400  
**MATERIALS:** EPDM, NBR, CSM



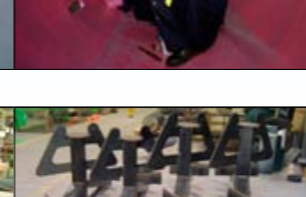
**GUMIRANI VENTILI**  
 oblaganje nevulkaniziranom "tvrdom" gumom i naknadna vulkanizacija u autoklavu te strojna obrada brtvenih površina  
 dimenzije: od DN 50 do DN 250, **MATERIJALI:** tvrda guma – WAGUNIT, CHEMONIT  
**RUBBER COATED VALVES**  
 rubber coating with raw „hard“ rubber and subsequently vulkanization in an autoclave, then machinery finished surfaces  
 dimensions from DN 50 to DN 250, **MATERIALS:** WAGUNIT, CHEMONIT



**GUMIRANI VENTILI**  
 oblaganje nevulkaniziranom "mekom" gumom i naknadna vulkanizacija u autoklavu te strojna obrada brtvenih površina  
 dimenzije: od DN 50 do DN 250  
**MATERIJALI:** meka guma EPDM, NR  
**RUBBER COATED VALVES**  
 rubber coating with raw „soft“ rubber and subsequently vulkanization in an autoclave, then machinery finished surfaces  
 dimensions from DN 50 to DN 250  
**MATERIALS:** soft rubber EPDM, NR



**GUMIRANJE SPREMNIKA KISELINA, KATIONSkih, ANIONSkih I MJEŠOVITIH FILTERA, cjevovoda velikih dimenzija**  
 gumiranje u našem pogonu ili pogonu naručitelja, oblaganje "tvrdom" gumom i vulkanizacija u autoklavu (maksimalan promjer 3000 i duljine 6000mm) ili direktna vulkanizacija u spremniku vodenom parom ili vodom  
**MATERIJALI:** tvrda guma – WAGUNIT, CHEMONIT, meka guma CLIIR kvalitete, **garancija na uslugu i ugrađen materijal do 10 godina**  
**RUBBER COATING OF ACID TANKS, CATION, ANION AND COMBINED FILTERS, PIPELINES OF BIG DIMENSIONS**  
 rubber coating in our plant or in plant of customer, rubber coating with raw „hard“ rubber and subsequently vulkanization in an autoclave (max. Diameter 3000 mm and length 6000 mm) or directly vulkanization in tank with steam or water, **MATERIALS:** hard rubber – WAGUNIT, CHEMONIT, soft rubber CLIIR, **Up to 10 years warranty on performed work and materials**



**GUMIRANJE KONSTRUKCIJSkih ELEMANATA – zaštita od habanja i korozije**  
 kombinacija tvrde i meke gume s povećanom otpornošću na habanje  
 maksimalne dimenzije: promjera do 3000 i duljine do 6000mm  
**RUBBER COATING OF CONSTRUCTION COMPONENTS – protection from abrasion and corrosion**  
 combination of hard and soft rubber with increased resistance to abrasion  
 max. Dimensions : diameter up to 3000 mm and length up to 6000 mm



## PROIZVODI OD RECIKLIRANE GUME / RECYCLED RUBBER PRODUCTS

GUMIIMPEX-GRP prva je tvrtka u Hrvatskoj koja 2005. započinje RECIKLIRANJE otpadnih auto-guma. **Osnovni cilj smanjenje štetnog utjecaja na okoliš uz ponovno korištenje vrijednih svojstava gume,** što Hrvatsku pridružuje zemljama koje kvalitetno organiziraju gospodarenje otpadnim gumama. Postupkom mehaničke reciklaže proizvodi se gumeni granulati, gumeni prah i gumene niti, uz inovativne mogućnosti primjene u proizvodima od reciklirane gume.

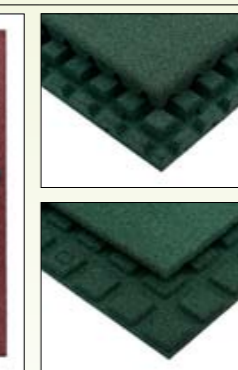
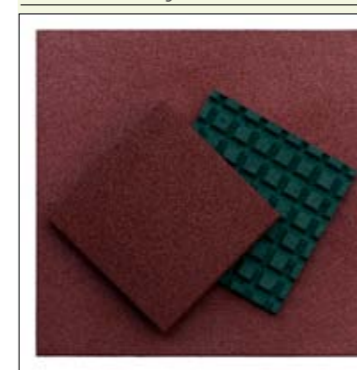
GUMIIMPEX-GRP - the first company in Croatia which started in 2005. with used tires RECYCLING. **The main objective is to reduce harmful influence of tire waste on environment and reuse valuable rubber characteristics again.** With that act Croatia follows nations with high-quality standards regarding managing waste tires. Mechanical recycling produce rubber granulates, rubber dust, and rubber fibers, with the possibility of innovative applications.

## ZAŠTITNE GUMENE OBLOGE / PROTECTIVE RUBBER TILES

Zbog sastava (gumeni granulati) odlikuju se visokom elastičnošću i sposobnošću apsorpcije udaraca (zaštita od ozljeda prilikom pada), što rezultira visokom stupnjem sigurnosti na dječjim igralištima. Sigurnost igra veliku ulogu u slobodnim aktivnostima i sportu. Ploče od gumenog granulata za oblaganje sportskih terena odlikuju se vrlo poželjnim karakteristikama potrebnim za multifunkcionalne sportske terene i igrališta za slobodne aktivnosti. Zbog izuzetne vodopropusnosti ploča, obloženi tereni su uvijek suhi, bez opasnosti od sklizanja te su sigurni i upotrebljivi bez obzira na vremenske uvjete. Zaštitne podloge od gumenog granulata iskazuju svoju vrijednost jednostavnim oblikovanjem i prilagodbom već postojećim spravama na igralištima kao i brzim i jednostavnim polaganjem te održavanjem. **Podrobne informacije dostupne su prema konkretnom zahtjevu.**

Due to its contents (rubber granulate), the tile features high elasticity and impact absorption (protection from fall injuries), which further leads to a high of security children on playgrounds. Safety plays a big role in recreational activities and sports. Rubber granulate tiles for lining sports fields feature many useful characteristics necessary for modern functional sports fields and recreational areas. Due to exceptional permeability of tiles, lined fields are always dry, present no danger of sliding and may be used in any weather conditions. Protective rubber granulate tiles exhibit their value through simple shaping and adjusting to already present playground equipment, as well as through quick and simple tiling and maintenance. **Detailed information is available upon request.**

Raspoloživo u crnoj, zelenoj i crvenoj boji  
 Available in black, green and red color



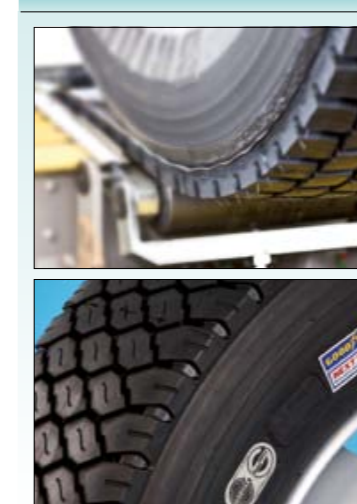
dimenzija / dimension	PRIMJENA / APPLICATION
1000x1000x20mm	Podne obloge pružaju učinkovitu zaštitu od ozljeda, pa su stoga namijenjene za oblaganje površina u sljedećim objektima: - dječja igrališta - centri za njegovu starijih osoba - rehabilitacijski centri - školska dvorišta i dječji vrtići - tereni za igru i slobodno vrijeme
1000x1000x25mm 500x500x25mm	- oko bazena - pješačke i biciklističke staze - terase, garaže i radionice - ispod perlica rublja za izolaciju zvuka i vibracija
1000x1000x30mm 500x500x30mm	Rubber tiles offering efficient protection from injuries, and therefore suitable for the following facilities: - children playgrounds - elderly health care centers - rehabilitation centers - schoolyards and kindergartens - sports fields and recreational areas - around swimming pools - walkways and bicycle lanes - terraces, garages and workshops - below washing machines for sound and vibration insulation
500x500x43mm 500x500x45mm 500x500x55mm	
1000x250x50mm	

## KOTAČI od reciklirane gume / Recycled rubber WHEELS



DN 200 mm  
 Razne industrijske namjene (kontejneri, kante za smeće...).  
 Different industrial purposes (containers, trash cans...).

## OBNOVLJENE (PROTEKTIRANE) GUME ZA TERETNA VOZILA I AUTOBUSE / TIRE RETREADING



Velik dio proizvodne djelatnosti GUMIIMPEX-GRP-a čini uprava obnavljanje guma. Koliko su sigurne i vrijedne obnovljene gume pokazuje činjenica da transportna poduzeća, koja egzaktno kalkuliraju svoje troškove, u prijevozu tereta i putnika rabe uglavnom kvalitetne obnovljene gume. **Komparativne prednosti Gumiimpexovih OBNOVLJENIH GUMA za teretna vozila i autobuse:** Suвременa tehnologija, oprema i znanje daju izvanredan rezultat – guma obnovljena u Gumiimpexovoj protektirnici zadovoljava vrlo zahtjevne testove međunarodnih institucija. **CERTIFIKAT ECE R 109**, međunarodni standard od 11.09.2002., izdalo Ministarstvo transporta u Luxemburgu. **HOMOLOGACIJA E13-109R-000015** omogućuje uporabu obnovljenih guma na prometnicama Europske unije. **USLUŽNO obnavljanje** teretnih guma ili **PRODAJA obnovljenih teretnih guma** / prema potrebi korisnika.

A large portion of Gumiimpex production has just the tire retreading program. The value of safe retread tires is best observed through the fact that transport companies that take great care in careful calculation of their costs mainly use quality retreaded tires for both the transport of cargo and passengers.

**Comparative advantages of Gumiimpex RETREADED TIRES for freight vehicles:** modern technology, equipment and knowledge equal results: a tire retreaded in Gumiimpex shop fulfills very rigorous international institution tests. **ECE R109 CERTIFICATE**, international standard as of 11.09.2002, issued by the Ministry of Transport in Luxembourg. The **E13-109R-000015 Certificate** allows the use of retread tires on the streets of the European Union. Retreading of freight vehicle tires or SALE of retreaded tires / as the customers may need.

